

# AUTOMATIC CNC VISION MEASURING SYSTEM (ADVANCED TYPE) CODE ISD-F432



VIDEO



computer is included

- Stable and high-precision measurement under high-speed, silent and stable mode
- Accurately detect the edge of surface size



six-ring eight-zone ring light (included)



vertical light (included)

## SPECIFICATION

Camera		giga-bit network camera (650TVL)
Measuring range (X*Y*Z)		400×300×200mm
Granite stage size		827×480mm
Glass stage size		450×350mm
Resolution of X/Y/Z axis		0.5μm
Accuracy of X/Y axis		≤(2+L/250)μm (L is the measuring length in mm)
Accuracy of Z axis		≤(3+L/150)μm (L is the measuring length in mm)
Objective		0.7X~5X (zoom)
Working distance		68mm
Magnification		28X~155X (on 23.5" monitor)
Illumination	surface	six-ring eight-zone ring light and vertical light
	contour	bottom horizontal light
Max. height of workpiece		200mm
Max. weight of workpiece		30kg
Operation system		Windows 10
Power supply		220V±10% (AC), 50Hz
Environment requirement		temperature: 18~24°C, relative humidity: 30~75%
Dimension (L*W*H)		1270×910×1750mm
Weight		360kg

## STANDARD DELIVERY

Main unit	1 pc
Computer	1 pc
Computer table	1 pc
Calibration glass chart	1 pc
Software	1 pc



laser probe (optional)



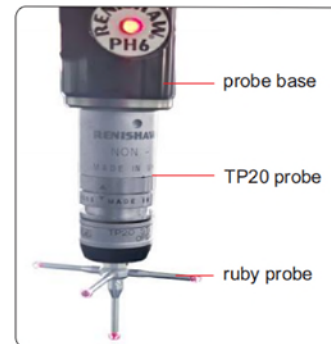
plate clamp (optional)

## OPTIONAL ACCESSORY

Advanced probe	probe base <sup>*</sup>	code <b>ISD-F-BASE1</b> (must be installed before shipment)
	probe <sup>*</sup>	code <b>ISD-F-TP20</b> (must be installed before shipment)
	ruby probe	optional M2 probe series with <b>ISQ-01</b>
Standard probe	probe base <sup>*</sup>	code <b>ISD-F-BASE2</b> (must be installed before shipment)
	ruby probe	code <b>ISD-F-P2</b>
		code <b>ISD-F-P3</b>
Laser probe <sup>**</sup> (can measure glass thickness, step height, flatness, height etc.)		code <b>ISD-F-PB</b> (must be installed before shipment)
Special lens for large field navigation		code <b>ISD-F-LENS</b> (must be installed before shipment)
PLC full-angle intelligent programmable lighting system		code <b>ISD-F-LIGHT</b> (must be installed before shipment)
Plate fixture (manual self-locking tempered glass)		code <b>ISD-F-HOLDER</b> glass size: 450×350mm can be customized
Protector		code <b>ISD-F-PROTECTOR</b> (must be installed before shipment)
Contour comparison module		code <b>ISD-F-PROFILE</b>
Office software		code <b>7313-OFFICE</b>

\* The probe head and probe are Renishaw brand

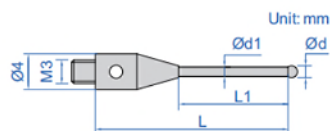
\*\* Laser probe is KEYENCE brand



advanced probe (optional)



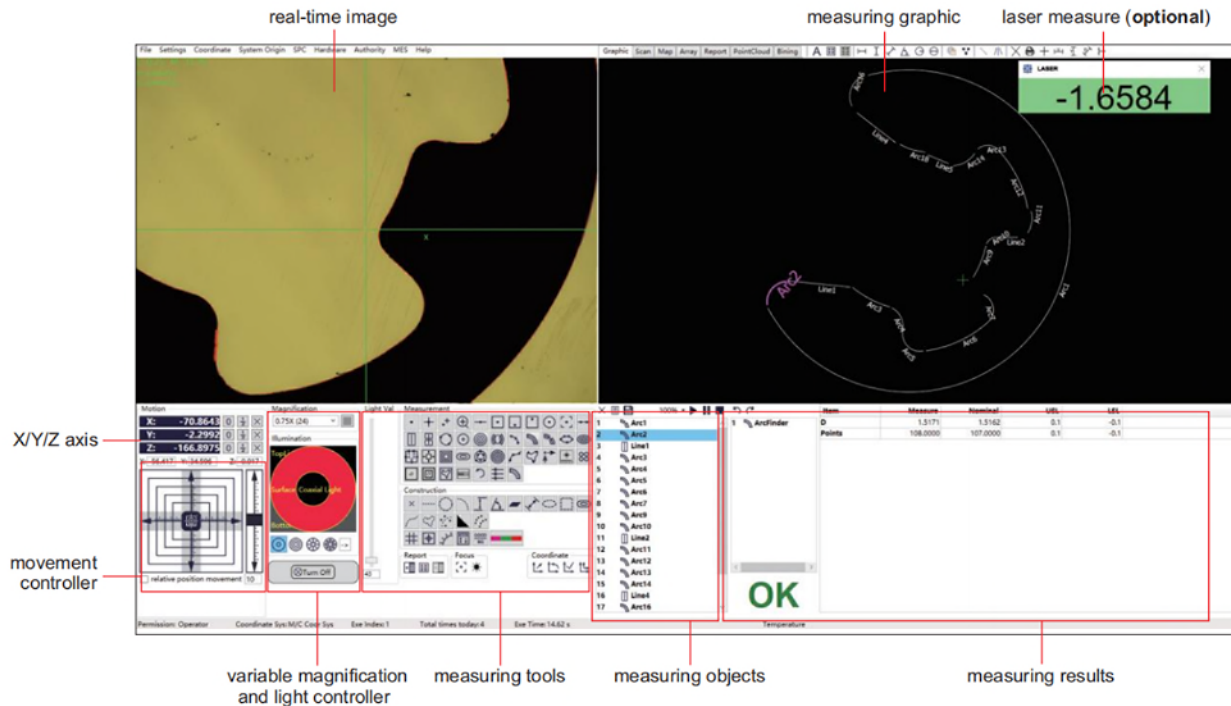
standard probe (optional)



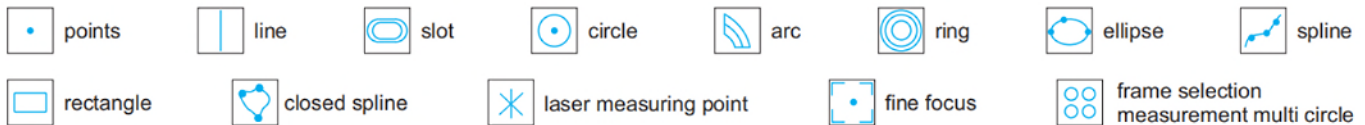
## STYLUS (INCLUDED) SPECIFICATION

Code	Material	Ød	Ød1	L	L1	Quantity
ISD-F-P2	ruby ball/stainles steel stem	Ø2mm	Ø1.4mm	21mm	8mm	1 pc
ISD-F-P3		Ø3mm	Ø1.5mm		12mm	1 pc

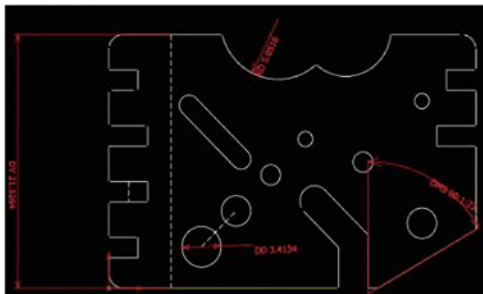
## MEASURING SOFTWARE (INCLUDED)



- Operation system: Windows 10
- Language: English
- Image measuring methods: crosshair point, manual point, auto point, zoom in point, line point, center point, lowest point, highest point, closest point, focus point
- Constructable elements: point, line circle, arc, height, angle, plane, distance, ellipse, rectangle, construction ringgroove, spline, closed spline, profile, geometric tolerance
- Geometric tolerance: concentricity, parallelism, verticality, angularity, symmetry, circular, arc profile
- Measurement elements can be translated and rotated
- Measuring data can export to Excel, DXF and other format files. The image area can save BMP image format
- The software includes CAD drawing import module
- The software includes SPC analysis module. The measurement software is seamlessly linked with the SPC module. After the measurement is completed, the measurement software automatically imports the data into the SPC database, allowing simple data analysis
- Dimension measuring tools:



### ■ Element annotations



### ■ Accurately detect the edge of the surface size

